

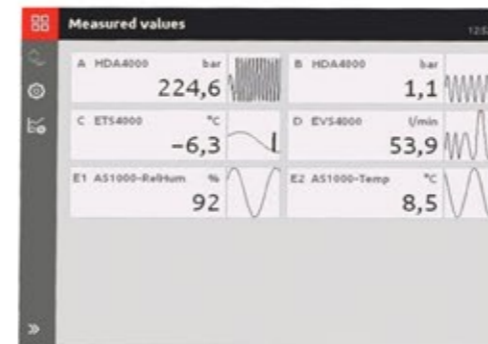


## Pre-docking inspection includes:

- ✓ Inspection of hydraulic Systems up to 310 bar on 8 points
- ✓ Recording of pressure/temperature/flow rate and condition monitoring of hydraulic system
- ✓ Technical reports with various diagrams
- ✓ Quotation of spares parts needed
- ✓ Quotation of services rates including time & work completion
- ✓ Inspection certificate

## APPLICATIONS

1. **CRANES**
2. **FIVA VALVES**
3. **MAIN ENGINE**
4. **STEERING GEAR**
5. **DECK MACHINERY**
6. **FRAMO HYDRAULIC SYSTEM**
7. **ALPHA LUBRICATOR SYSTEM**



## INSPECT-RECORD-PREVENT FOR HYDRAULIC SYSTEMS



cmagreece.com

Send your inquiry to: [technical@cmagreece.com](mailto:technical@cmagreece.com)

**+30 210 46 158 31**

**CERTIFIED  
ENGINEERS**

Our experienced engineers are up to date with the current technologies.



Worldwide 24/7 technical support