

BWTS

LIMIT SWITCH

BOXES FOR VALVES

Cost Effective Solution (Suitable use) for BWTS VALVES

Sensor boxes FESTO SRBC are used for electrical feedback and control of the position of process valves. Electrical position indicators for manually and pneumatically operated quarter turn valves. This is signalled by an optical indication and transmitted to the plant control system.



- ✓ Special limit switch boxes according to BWTS requirements
- ✓ High-quality standard limit switch boxes
- ✓ Precise and long-life functioning limit switch boxes
- ✓ Pre-assembled mounting adapter for ease of installation
- ✓ All-rounded with ATEX protection and IECEX

MARINE
CMA
AUTOMATION

D.ARGOUDELIS & CO S.A.

RETROFIT SOLUTION FOR BWTS VALVES

Electrical position indicators for manually and pneumatically operated quarter turn valves limit switch box, detects the valve position of manually and pneumatically operated quarter turn valves. This is signalled by an optical indication and transmitted to the plant control system. Position indicator can be fitted to all quarter turn valves, such as butterfly valves, ball valves and valves with gearbox with an easy modification, limit switch boxes are suitable for explosion-proof areas to ATEX and IECEX.

KEY FEATURES & PRODUCT RANGE OVERVIEW FUNCTION

Sensor boxes FESTO SRBC are used for electrical feedback and control of the position of process valves. They can be mounted quickly and easily on quarter turn actuators with a connection pattern to VDI/VDE 3845 using mounting adapters. The sturdy design of the sensor box FESTO SRBC is ideal for the harsh conditions in process automation.



INNOVATIVE

Pre-assembled mounting adapter for ease of installation

Trip cams are easy to set without additional tools

Sturdy, corrosion-resistant design, ideal for use in harsh ambient conditions

Clearly visible 3D position indicator allows rapid detection of the current position of the quarter turn actuator



FLEXIBLE

Weather-tight housing for outdoor applications too

Mechanical, inductive or magnetic switch variants for virtually all types of application

Intrinsically safe variants for use in potentially explosive areas.

Two cable inputs for common power supply for the sensor box and solenoid valves as standard



DESIGN

Sturdy aluminium housing with two cable inputs M20 x1.5

Captive stainless steel screws on the housing cover

Pre-assembled stainless steel mounting adapter 80 x30 h20 for easy of mounting on standard actuators to VDI/ VDE 3845

Cable connector and blanking plug included in the scope of delivery

3d OPEN /CLOSED position indicator

Mechanical, inductive or **magnetic switch** variants

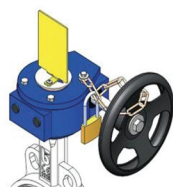
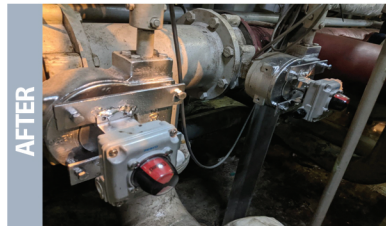
Number of switches :2

IP67, NEMA 4/4X

cCsaus Listed ,General Purpose

Atex ia version

SIL 2 to IEC 61508



get in touch



20, Fokionos str.,
185 45 Piraeus
Greece



P : +30 210 46 15 831
F : +30 210 46 15 832



sales@cmagreece.com
www.cmagreece.com